

Forced sexual intercourse among women receiving HIV Voluntary Counseling and Testing in a healthcare center in Kinshasa and its association with HIV

Burgueño E¹, Carlos S², López-del Burgo C², Ndarabu A¹, Osorio A², Tshisuaka P¹, Stozek M², Mwamba P¹, de Irala J²

¹ Monkole Hospital. Kinshasa, D.R.Congo

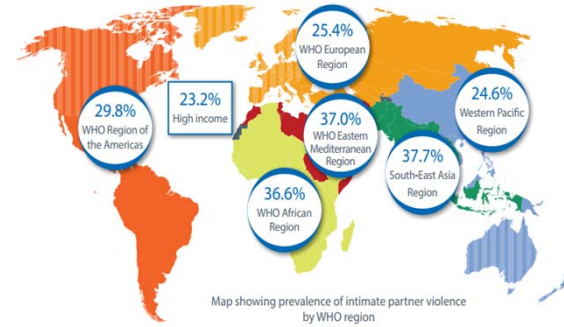
² Department of Preventive Medicine and Public Health. University of Navarra; and Institute for Culture and Society (ICS), University of Navarra.

BACKGROUND

World: 1/3 women experience Intimate Partner Violence (IPV)

Central Africa: ~66% IPV

D.R.Congo: 52% women reporting IPV



OBJECTIVES

Analyze among women attending HIV Voluntary Counseling and Testing:

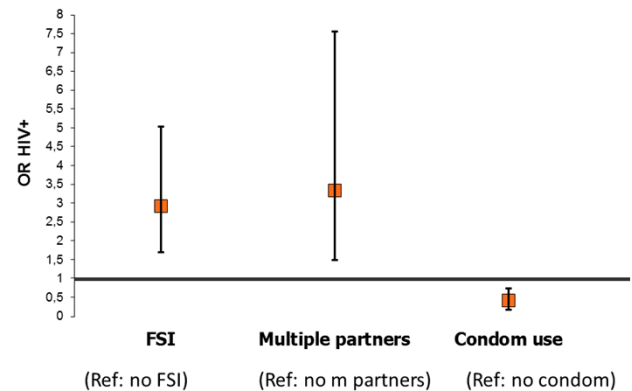
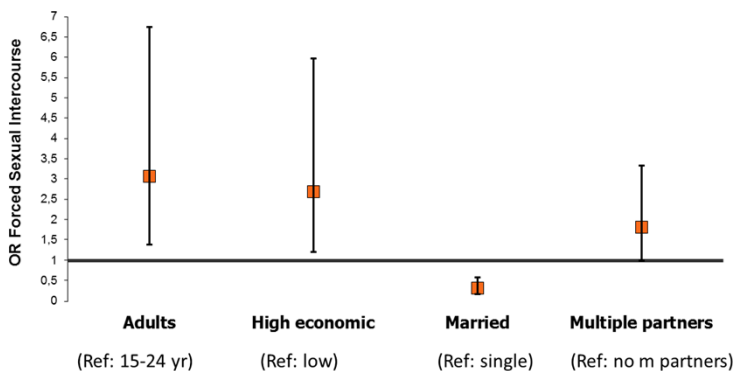
- Prevalence of forced sexual intercourse (FSI)
- Association: (1) Sociodemographics, sexual behaviors with FSI
(2) FSI with HIV

METHODS

- Case-control study (prospective recruitment). Dec 2010 - June 2012. Monkole Hospital.
- Women attending Voluntary Counseling and Testing, aged 15-49
- Face-to-face interview: HIV knowledge, attitudes and behaviors
- Statistical analyses: Univariate and multivariate logistic regression (Stata 12.0)

RESULTS

- 489 women/1,630 participants: 143 HIV+ cases and 346 HIV- controls
- 38%** ever FSI



CONCLUSIONS

FSI is strongly associated with HIV infection and, together with multiple sexual partnerships, is a key HIV determinant in Kinshasa. This aspect needs to be acknowledged by qualified HIV counsellors as possible risk factor of HIV infection during counseling interventions.